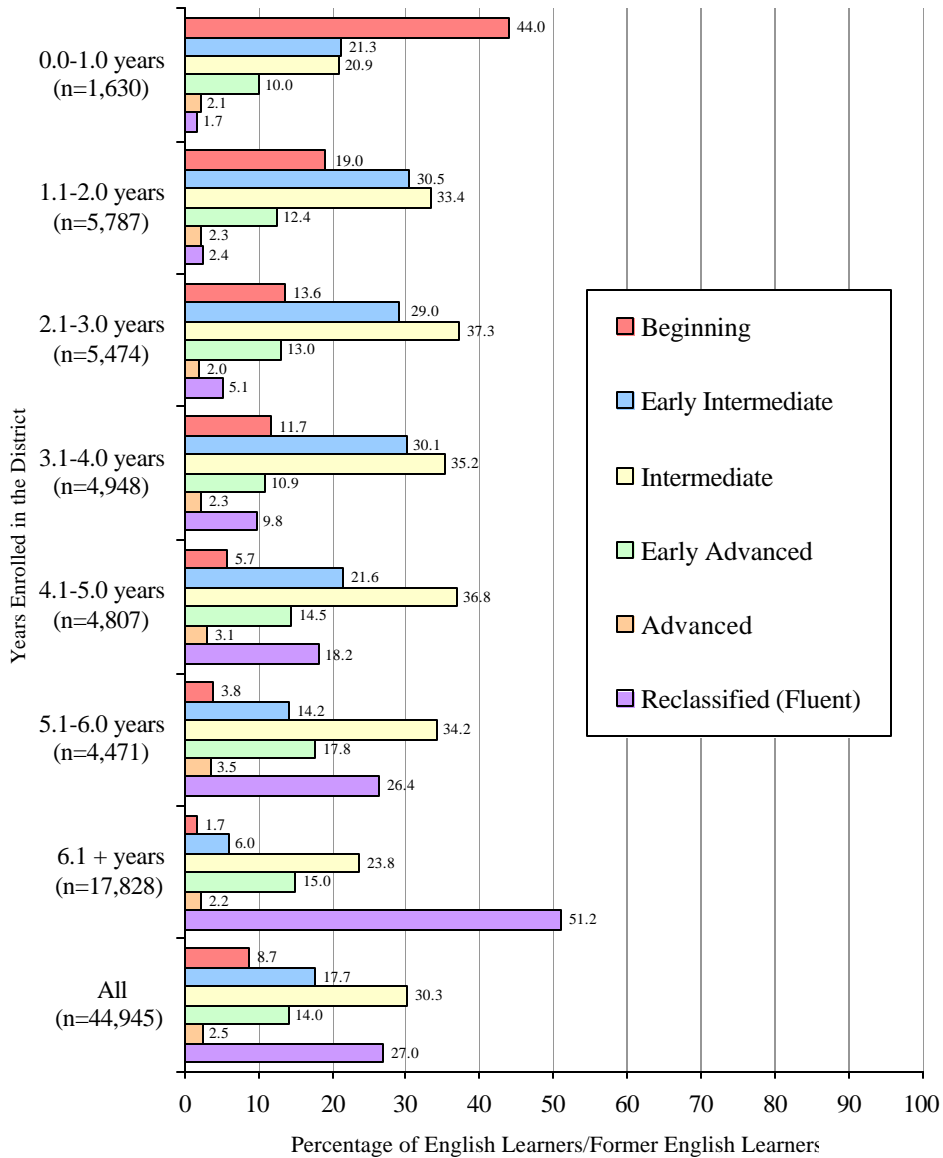


California English Language Development Test (CELDT) Annual Assessment Results* (October 31, 2001):
 Overall Proficiency Level (OPL) of English Learners by Years Enrolled in the District
 and Reclassification Information for Former English Learners** by Years Enrolled in the District



* It is important to note that these annual assessment results do not include students for whom the CELDT was used to initially identify them as either an English Learner or fluent-English speaker (e.g., all kindergarten students). Because the initial identification results are not yet available, the English Learner population is *underrepresented* by roughly 6,700 students.

** Former English Learners do not take the CELDT since they have already been reclassified to fluent-English status.

District Expectations for OPL by Years Enrolled in the District	
0.1 – 1.0 years	Beginning
1.1 – 2.0 years	Early Intermediate
2.1 – 3.0 years	Intermediate
3.1 – 4.0 years	Early Advanced
4.1 – 5.0 years	Advanced
5.1+ years	Reclassified