



### Special Education Programs Division

San Diego City Schools (SDCS) is committed to providing children and young adults with disabilities a Free And Appropriate Public Education (FAPE), consistent with federal and state laws. Both federal and state policies mandate timelines for referral, assessment, identification, placement and provision of special education, including services to all students with exceptional needs.

The Special Education Programs Division is separated into two units, Operations and Instruction, both reporting to the Director of Special Education.

- The Operations Office acts as an interface that enables the department to function in an efficient and effective manner in support of the teaching and learning at school sites.
- The Instruction/School Support Office provides support to schools in all instructional areas, which includes monitoring and supervising professional development for staff who work with the approximately 17,000 students served by the Special Education Programs Department.

Additionally, eight central program offices provide focus and direction and monitor the effectiveness of support services to students, schools, staff and parents.

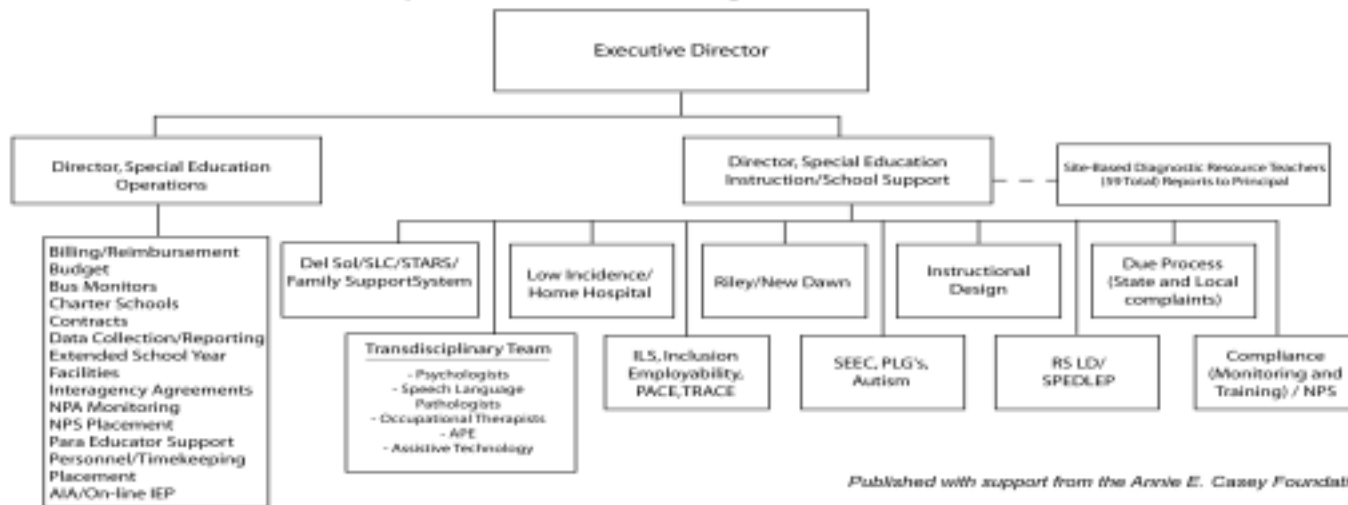
Diagnostic Resource Teachers (DRTs) are assigned to schools for the purpose of proactively supporting special education services at the school level. The DRTs receive intensive professional development throughout the school year. While not directly responsible for student instruction, DRTs collaborate with both special and general education staff, serve as site liaisons and help principals in matters regarding special education process, procedures and compliance, and support new teachers as they acquire additional skills in teaching.

Most services are provided to students in the general education setting. Del Sol Academy, Riley and New Dawn are schools that serve the unique needs of those students who require a more supportive environment.

**SUMMARY**

- ❖ SDCS serves approximately 17,000 students with special needs, the second largest population of special education students in California
- ❖ School support is provided by Diagnostic Resource Teachers (DRTs) and disability specific program offices
- ❖ Students receive services and supports in the most natural and least restrictive setting

#### Special Education Organization Chart



Published with support from the Annie E. Casey Foundation

Contact Information: Special Education Programs Division: (619) 725-7600  
Media inquiries: (619) 725-5578

[www.sandi.net](http://www.sandi.net)

Serving more than 138,000 students, San Diego City Schools is the second largest school district in California, with 200 educational facilities and more than 14,500 full-time equivalent positions (representing over 18,800 employees.) SDCS is improving student achievement by focusing on challenging education in reading, writing and mathematics. The district is committed to supporting schools and enhancing the classroom learning environment through modernized facilities and resources and through parent, teacher and community involvement in the educational process.