

ATTENTION MACINTOSH USERS

If you are **recently** having problems with black or blank pages it may be due to a new Safari version for Mac OS X. Please ensure you have the right versions of Safari and Adobe to go with your operating system (OS).

If you have **MAC OS 10.3.9** – you should be using Safari 2.x with Adobe 7.0.8 or 9.

If you have MAC OS 10.4 – you can use either Safari 2.x or 3.0.x. But if you are using Safari version 3 you **must** use Adobe 8.0.x.

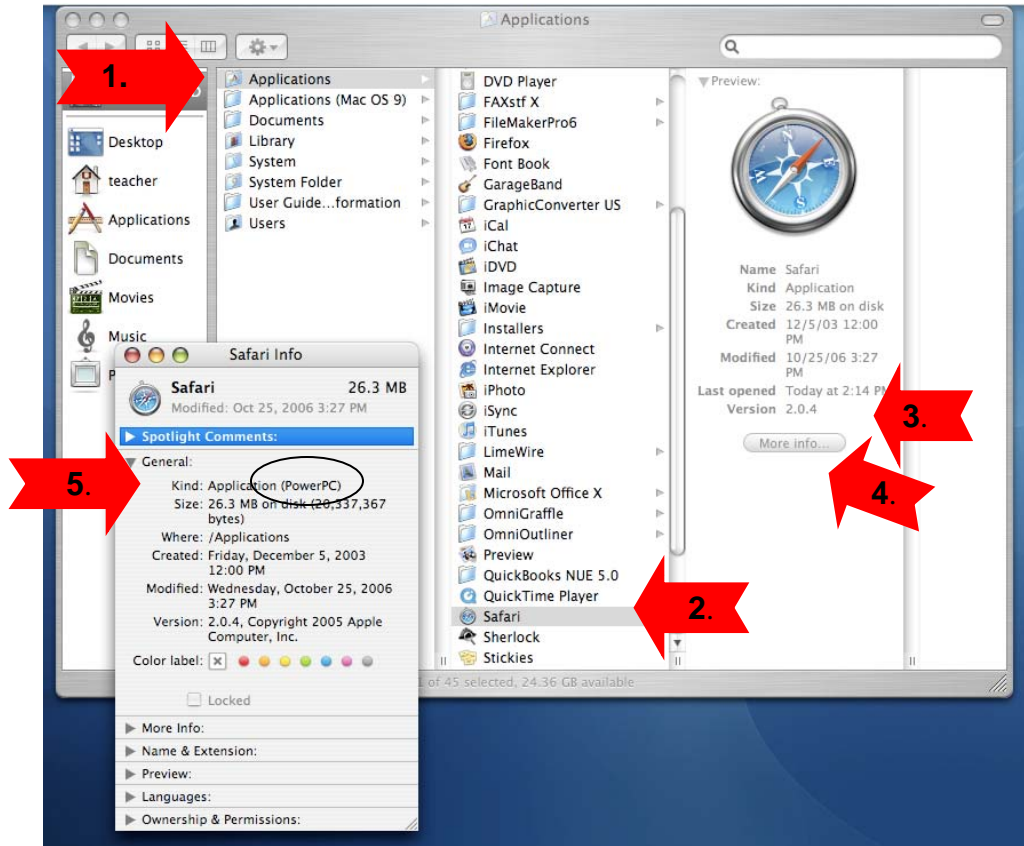
NOTE: You should check to see which version of Safari and Adobe your computer has **before** you do any downloads or installs. To verify versions, do this:

VERIFY Operating System (OS)



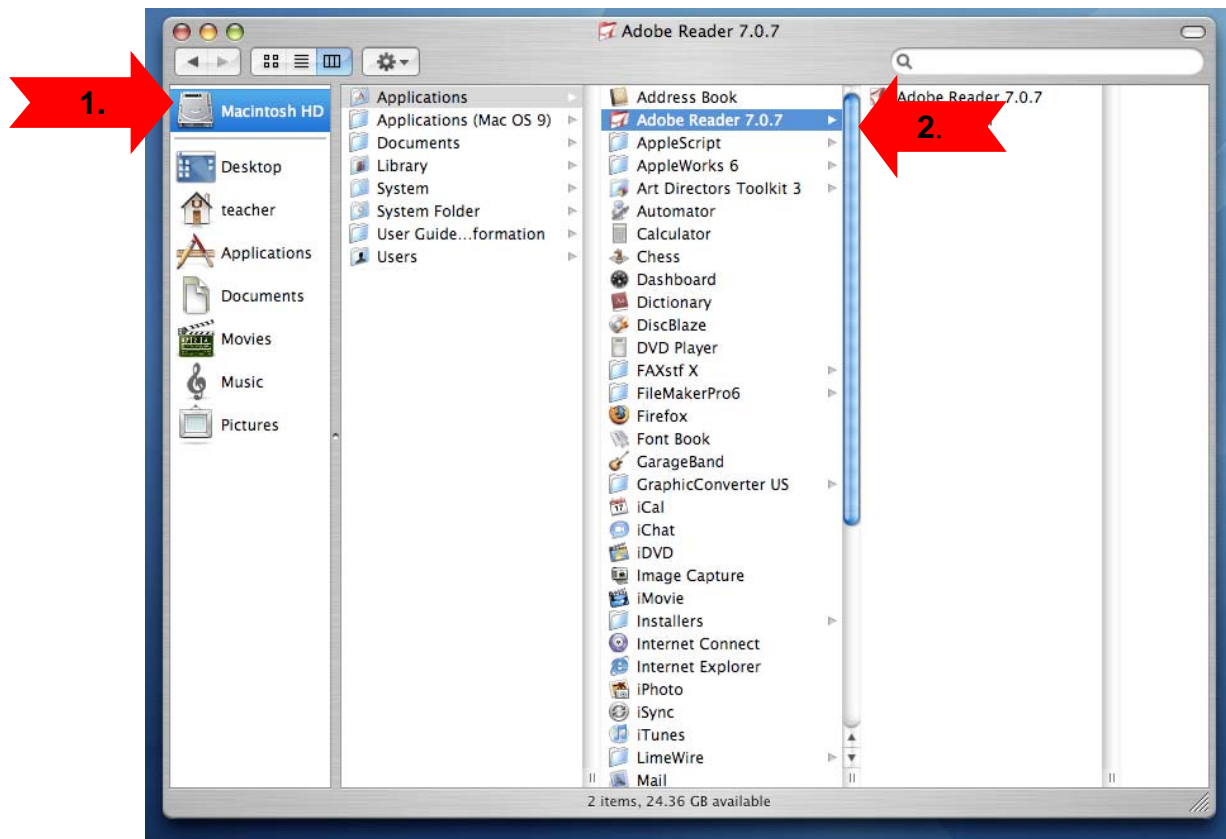
1. Click on the Apple (top left hand corner)
2. Click on "About this Mac"
This is where you will find the Operating System Version

VERIFY SAFARI VERSION



1. Double click on your Mac **Hard drive** on your desktop, click on **Applications**
2. Click on **Safari** in applications
3. This is where your Safari version is located
4. Click on “**More info**” button
5. This is where the **type of Safari** is located (in this case **PowerPC**)
 - this is important to know when deciding what Adobe version to download, if needed.

VERIFY YOUR ADOBE VERSION



1. Double click on your Mac **Hard drive** on your desktop, click on **Applications**
2. **IF** your Operating System is 10.4.x **AND** your Safari version is 3
3. Locate **Adobe** in the applications
 - If you have Adobe 7.x and need to upgrade to Adobe 8.x
 - trash Adobe 7 from this location prior to installing the new version
 - go to the district webpage - www.sandi.net and download Adobe 8