

2009-2010
Middle School
SEMINAR PROGRAM
Informational Evening

February 19, 2009
Bell Middle School
6:00 – 7:00 PM

Robin J. Nelson
(GATE Resource Teacher/Middle Schools)



Purpose/Outcome



- ✓ To discuss the challenges of middle school
- ✓ To recall the traits and needs of the highly and profoundly gifted middle school student
- ✓ To consider the design of middle school Seminar Program
- ✓ To review the Seminar registration process
- ✓ To field questions about Seminar

Challenges of Middle School



Challenges of Middle School

- ✓ New school environment and classmates
- ✓ Multiple classrooms and teachers
- ✓ Larger class sizes
- ✓ Adolescent social and emotional development
- ✓ Time management
- ✓ Independence/Dependence



Who are Your Seminar Students?



Just who are Seminar Students?

“Highly gifted children show incredible intensity in energy, imagination, intellectual prowess, sensitivity, and emotion which are not typical in the general population”

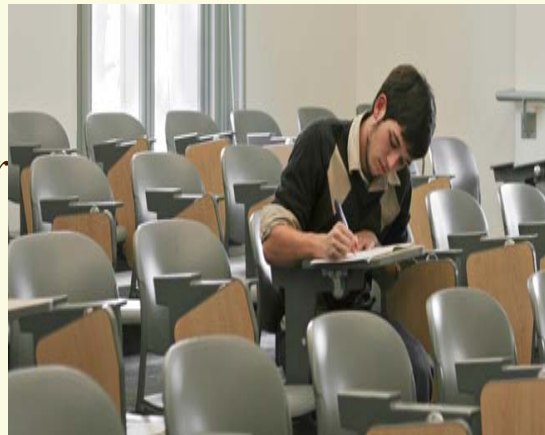
Hollingworth Center for Highly Gifted Children

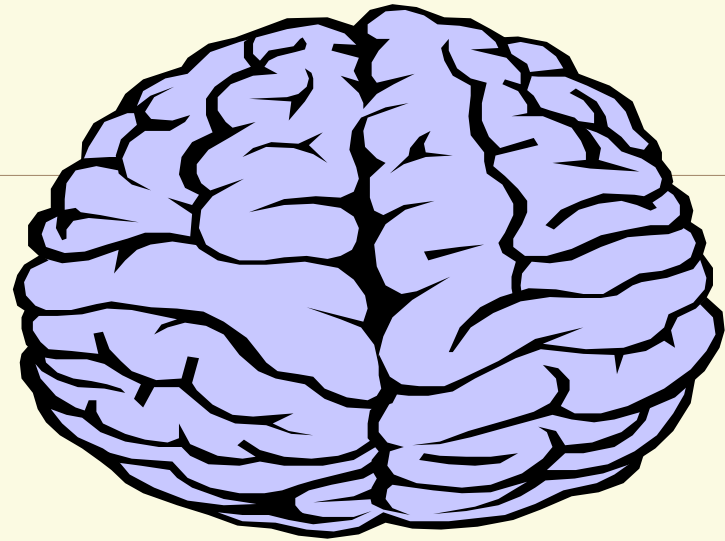


Gifted children are highly vulnerable.

“It may be nearly impossible for highly gifted children to conform their thinking to the ways in which others think. Some do not “group” well. Some have difficulty developing relations with others. Some are intensely sensitive.”

Dr. Linda Silverman
Gifted Development Center



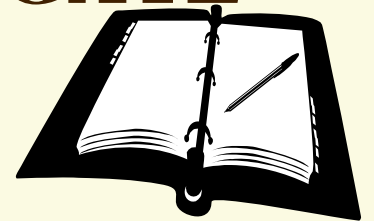


“Problems for the extremely able arise from the discrepancy between their level of development and the expectations of society”

Wendy C. Roedell, The Roeper Review

How does MS GATE Program fit into this picture?

- ✓ **Comprises several periods of the day**
- ✓ **Covers specific subject areas; check individual schools for information**
- ✓ **Offers Differentiated Curriculum**
- ✓ **Teachers are certified to teach GATE**
- ✓ **Seminar/GATE differences**



To serve the highly gifted, GATE classes offer:

Flexibility:

- ✓ Radical acceleration
- ✓ Embedded depth and complexity
- ✓ Truth-seeking
- ✓ Vast personal expression



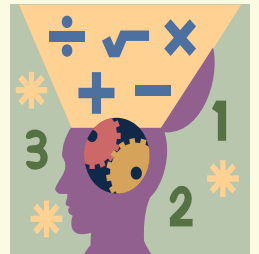
A GATE class is a **community** that allows for:



- ✓ **Acceptance**
- ✓ **Freedom and Responsibility**
- ✓ **Active citizenship**
- ✓ **Development of leadership**

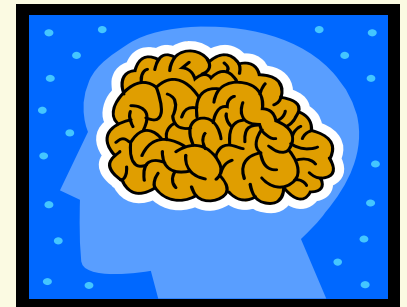
Who must register?

- ✓ Middle School Students who are articulating between elementary and middle/junior, and high schools.
- ✓ Students entering Seminar for the first time.



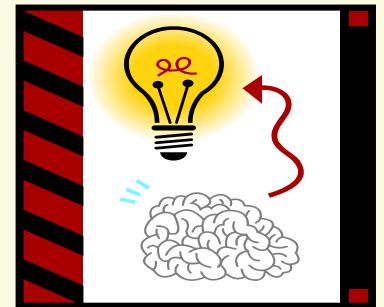
How do I register for a Seminar program?

- ✓ Review the Seminar Program booklet
- ✓ Visit school sites
- ✓ Network
- ✓ Know you student's needs, interests, and goals
- ✓ Trust your instincts



Where should I register?

A Seminar student has priority at
his/her neighborhood Seminar
Middle School



Let your neighborhood school know you are coming!

Send the following to the middle school in which your student is enrolling by

Friday , March 13, 2009

- ✓ **Registration form**
- ✓ **Copy of District Seminar identification letter**



What are the due dates?

- ✓ Friday March 13, 2009 = MS Seminar
Registration form due to the school sites
- ✓ Attach a copy of the school district letter
which states that your child is identified for
the Seminar Program
- ✓ It is highly recommended that you call the
school to schedule a visit for both you and
your child

Choice Enrollment Options

- ✓ **If you are interested in applying for another Seminar Program outside your area, you must do so by filling out a Choice Application**
- ✓ Choice Applications due: February 15, 2009
- ✓ All Schools Fair, Saturday January 31, 2009, Balboa Park Palisades Recital Hall (10am – 3pm)
- ✓ www.sandi.net/enrollmentoptions

How do I get an registration form?

- ✓ Applications are sent through school mail to seminar teachers at elementary school sites (grade 5 or exit grade).
- ✓ Seminar-qualified students not at a Seminar site have been mailed applications.
- ✓ Call the GATE office at 858-573-5998 or 858-573-5992.
- ✓ Visit the GATE website at <http://www.sandi.net/GATE2>

For More Information

Contact:

- ✓ School sites
- ✓ Enrollment Options- (619) 725-5673
<http://www.sandi.net/enrollmentoptions>
- ✓ Robin J. Nelson, GATE Resource Teacher
(858) 573-5992
rnelson@sandi.net

Thank-You for Coming!

**2009-2010
Middle School
SEMINAR PROGRAM
Informational Evening**

*February 19, 2009
Bell Middle School
6:00 – 7:00 PM*

