

Accessing TeacherConnection on an Apple Macintosh Computer Job Aid

Version 1.0 • Updated June 29, 2007

If you are using an Apple Macintosh to access TeacherConnection and the operating system running on your computer is any version of OS X (the color of the apple on the top left of your screen is blue), the Safari web browser must be used. If Internet Explorer is used on a Mac running OS X, the classes don't show up properly in the drop-down menu; they look invisible instead.

Launching Safari

An easy way to launch Safari is to click its icon on the Dock. The icon looks like a blue compass:



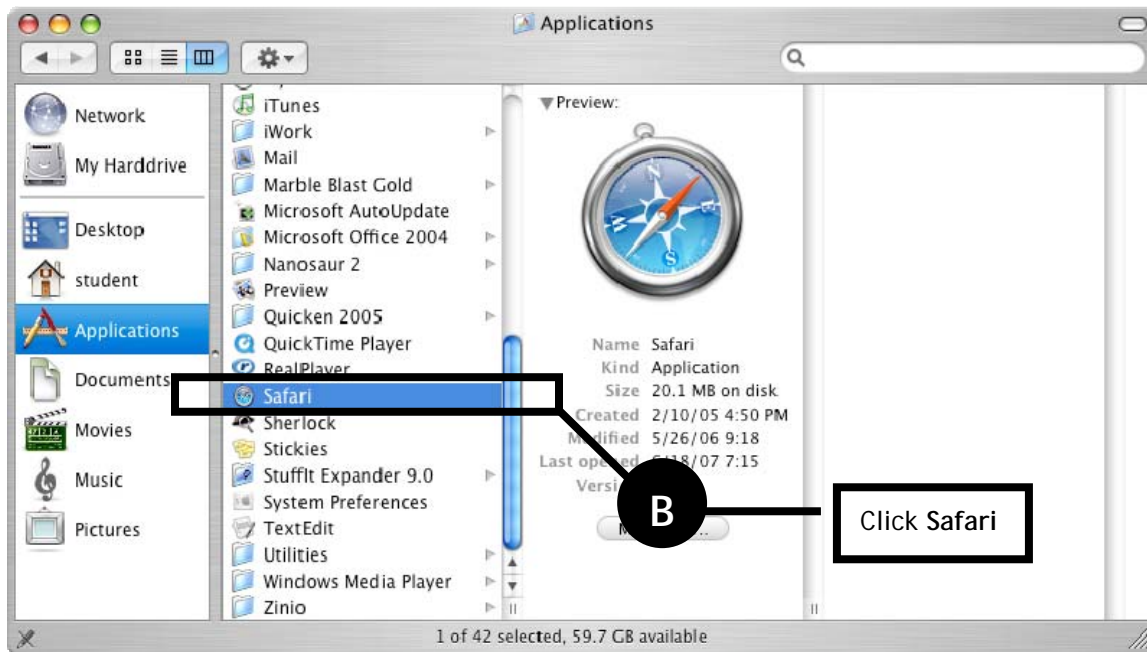
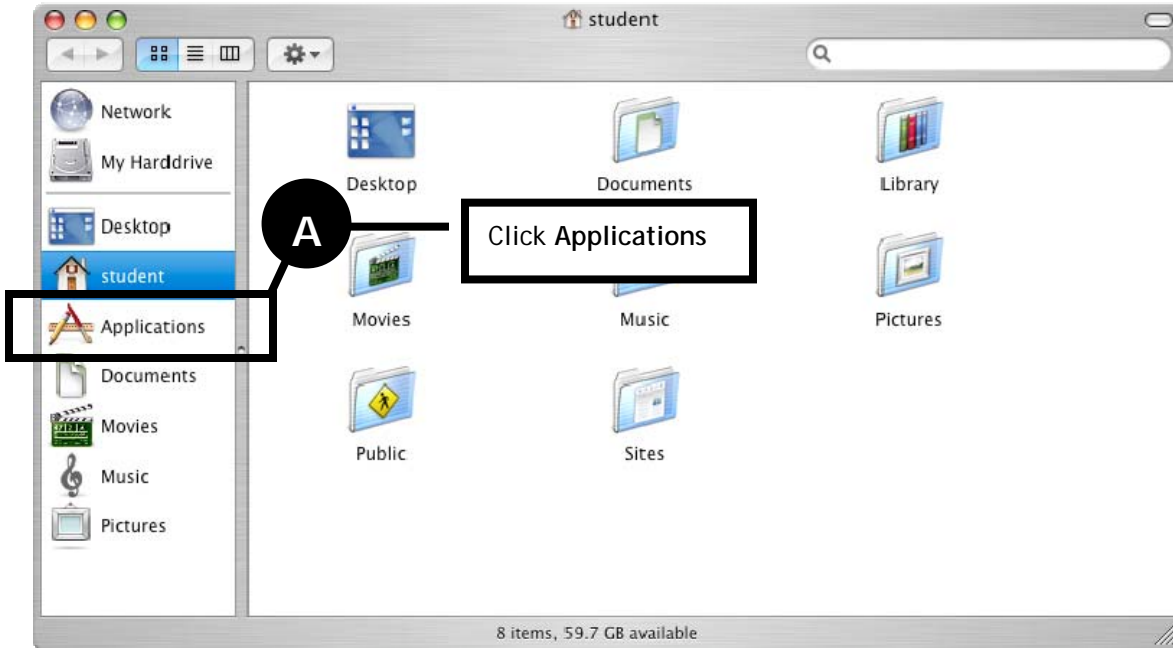
If you don't see Safari's icon in the Dock, you'll want to place it in your Dock.

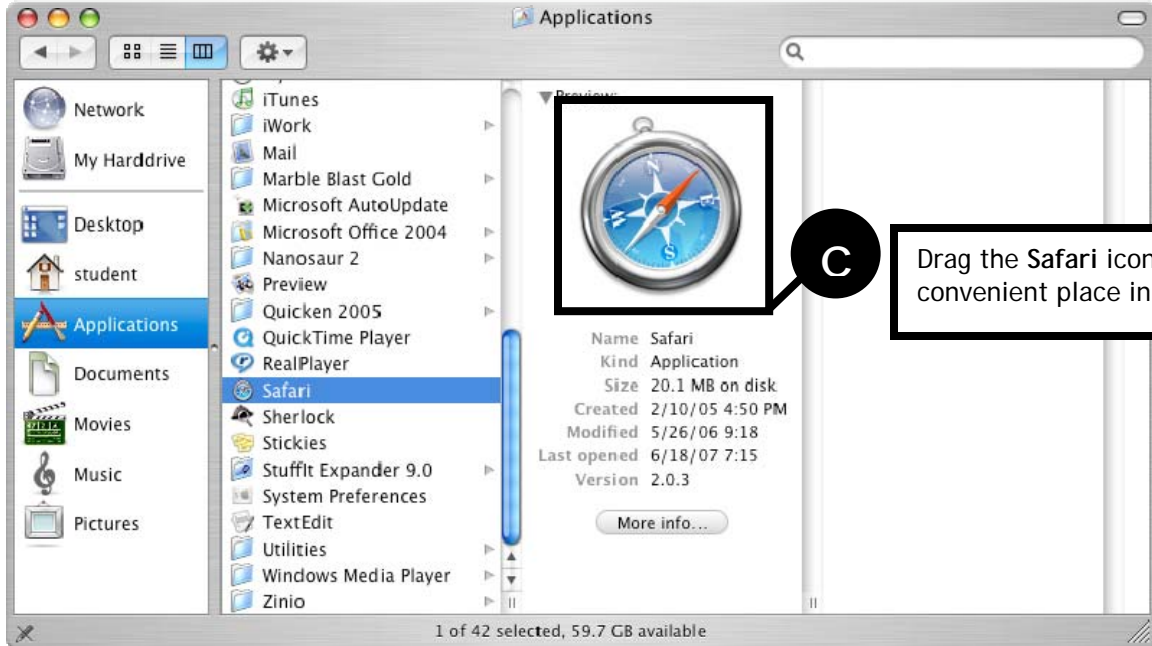
Placing the Safari icon in the Dock

Click anywhere on your desktop.



While holding down the Command key on your keyboard, press **N** to open a new window:





If you choose to drag the Safari icon between these two existing icons,



Your Dock will look like this:



Click the Safari icon in the Dock to launch the Safari web browser.